

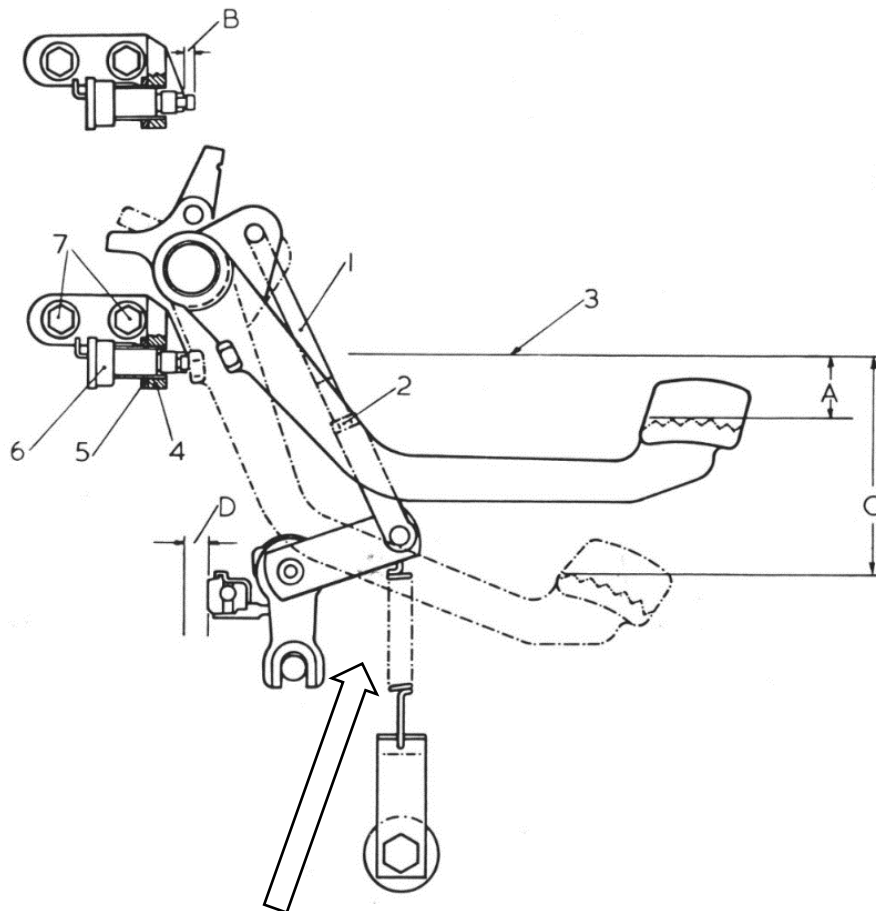


# 830574 KIT1 [11" Single Stage Clutch Kit, w/ Bearings - Reman]

## Instruction Guide

When converting the 3-spring pressure plate assembly (3/8" mounting holes) to the 9-spring pressure plate assembly (7/16" mounting holes), **use the inner diameter of the mounting hole to center the pressure plate assembly, not the outer diameter of the cover.**

1. Place the pressure plate in the flywheel with the top mounting bolt closest to the 12 o'clock position
2. Lift up on the assembly and install the mounting bolt located at the 6 o'clock position
3. Install the remaining mounting bolts



1. Clevis Rod
2. Locknut
3. Clutch Housing Face
4. Bracket
5. Locknut
6. Safety Start Switch
7. Bracket Securing Bolts

- A. 32.0 mm (1-1/4 in)  
B. 7.0 mm (9/32 in) Max.  
C. 115.0 mm (4-17/32 in)  
D. 12.0 mm (15/32 in)  
12.5 mm (1/2 in) Max.

Self-Adjusting Engine Clutch